

2021 Island Packet 439 "ZALE"

\$795,000 usd.

Island Packet Yachts

St. Petersburg, Florida - United States

CERTIFIED FACTORY TRADE-IN w/ WARRANTY



ZALE is a 2021 Island Packet 439 *NEXT GENERATION*. She is a factory trade-in and was commissioned just under 2 years ago, so she has very light use.

With the graystone / off-white exterior and the light maple interior color combination, ZALE is sure to catch your eye and be the center of attention.

Set up for serious off shore cruising and built with almost every factory option and upgrade, she is ready to go anywhere in the world and get you there safely, comfortably and in style... after all, she is an Island Packet.

- | | | |
|--------------------------------|------------------------------|-------------------------------|
| * Hard dodger and arch | * 1200ah of lithium & solar | * Back-up auto pilot (2) |
| * All electric winches | * Starlink and IridiumGO | * Full bimini and enclosure |
| * Solent rig with carbon sails | * 12v air-conditioning/heat | * Hydronic diesel heater |
| * Water maker | * Refrigerator / freezer (2) | * Washer / dryer combo etc... |

The price of a comparable new build with similar options would be \$1,025,000. **You can save \$230,000** and you don't have to wait 1 year to take delivery.

Plus, with the Factory Certification and Factory Warranty... you can buy her with confidence.

[YouTube ZALE Video Tour](#)

Scott Barone
Cell: 813-817-2222
scott@ipy.com

Darrell Allen
Cell: 727-418-8917
darrell@ipy.com

Specifications

LOA	47'0"
LWL	38'1"
BEAM	14'4"
DRAFT	5'0"
DISPLACEMENT	32,000 Lbs
HEADROOM	6'4"
BALLAST	12,000 Lbs
SAIL AREA	1,131 Sq Ft
MAST HEIGHT	62'0"
ENGINE	80 Hp Yanmar diesel (current hours 470)
PROPULSION	Max-Prop 4 blade Easy 21"x15" Feathering
FUEL CAPACITY	160 gallons
WATER CAPACITY	220 gallons
HOLDING CAPACITY	50 gallons

<u>Hull, Deck and Cockpit</u>	<u>Factory Option/ Upgrade Cost</u>
<ul style="list-style-type: none"> Storm staysail prep option including mast / deck fittings, sheets and sails Hull (graystone), IGU (graystone), deck, non-skid and headliner (off white) Boot stripe (gray) Barrier coat plus bottom paint (10 mil) Full bow rail and cockpit stern rails with integrated seats Flagpole mount w/SS flagpole and USA flag; with bow and stern LED navigation lights Hard 1" SS top rail from stern rails to side boarding gate stanchion Single lifelines at side boarding gates 25" high, 1" diameter stanchions with double 316 SS non-coated lifelines and stern gates (2) SS Mantus bow anchor rollers with adjustable top roller (4) Large 12" SS bow/stern cleats and chocks with chafe guards (2) large 12" SS spring line cleats with chafe guards per side Fresh water wash-down on bow Direct dockside water connection (14) SS opening ports w/screens (self-draining w/friction hinges and chrome knobs) (8) overhead aluminum frame hatches with Oceanaire shades and screens (8) Hull side non-opening ports Full length oval stainless-steel handrails along cabin top. (3) 9" high stainless-steel and red interior color dorade vents with line guards 304 stainless steel emergency tiller Low profile hard dodger w/ two hatches, lights and grabrails Iverson design bimini w/ window, window cover and connector Cockpit Strataglass enclosure (3) flexible solar panels on dodger w/ solar controller – 260 watts Covers for stratglass enclosure window panels Helm, winch and hatch covers Large cockpit with storage bins, propane storage and lazarette access Deluxe Sunbrella cockpit cushions w/ backrests 304 stainless steel rudder stops Integrated sea hood with teak or starboard trim Teak cockpit table w/ fold out leaves Gray Starboard cockpit drink holder Gray Starboard hatch boards 	<p>\$10,000</p> <p>\$8,500</p> <p>\$1,000</p> <p>\$2,000</p> <p>\$20,000</p> <p>\$7,900</p> <p>\$10,000</p> <p>\$6,000</p> <p>\$3,000</p> <p>\$3,000</p> <p>\$6,000</p> <p>\$2,000</p>

- Starboard companionway doors and trim \$2,000
- Large pedestal w/guard and IP inlay on compass
- Lewmar leather covered folding wheel \$1,500
- 12v plug type outlet and (2) USB outlets on pedestal
- Blue LED cockpit, transom steps and stanchion gate safety lighting (dimmable)

Arch, Transom & Anchor

- Fiberglass radar arch w/ davits, lights and Starlink antenna \$20,000
- Large sugar scoop style transom with port and starboard cockpit access
- Integrated 4 step pocket style SS transom boarding ladder w/ handholds on swim steps for boarding from water
- Hot and cold freshwater retractable shower for cockpit and swim step
- Stainless handrails on transom for boarding and as dinghy transom standoffs
- Stainless Island Packet step plates on side boarding gates
- Black composite eyebrow
- Encapsulated lead ballast
- (2) ten-pound propane tanks
- Lofrans 12V Tigres anchor windlass with helm control switch and bow foot controls
- Mantus primary anchor - 85 lb w/ swivel \$2,500
- Primary anchor chain 400' 3/8 HT \$3,000
- Ultra 316 SS secondary anchor – 46 lb \$2,000
- Secondary anchor chain 50' 3/8 w/ 300' 5/8 line and Mantus swivel \$3,500

Sail & Rigging

- Selden anodized aluminum mast with Antal halyard sliders, anodized boom
- LED mast spreader down and up lights, port and starboard flag halyards
- Standing rigging includes 12 stays total in standard Solent rig
- Running rigging: no stretch main, jib, reacher, spinnaker halyards, topping lift/spare main halyard, boom vang control line, 6 to 1 main traveler line, sheet lines for main, jib and reacher
- Selden Furlex head sail line furlers for 95% working jib and 170% reacher
- Single line main, jib and reacher sheeting lead to both cockpit primary winches
- Self-tacking deck track forward of mast for working jib
- Quantum fusion membrane main w/ stack pack, jib and reacher sails \$15,000
- (2) Harken 2-speed electric 60 primary winches \$16,000
- (1) Harken 2-speed electric 40 cabin top winch \$8,000
- (1) Harken 2-speed electric 45 halyard winch \$10,000
- (2) Harken 2-speed 35 furling line winches
- Spinlock cabin top line stoppers and main and jib sheet stoppers
- Selden solid adjustable boom vang with control line led to cockpit
- Reacher tracks with cars and turning blocks
- All Harken deck hardware and main sheet traveler with six to one purchase

Interior, Forward Stateroom & Head

- Light maple interior wood \$10,000
- Solid Sapele and light maple satin varnished sole (4 coats)
- Formica and hull side panels

- Integrated solid wood entry steps on engine access door w/ gas shocks
- Easy access to engine from front, side, and rear opening compartments with light
- Lighting in bilge compartments where needed
- Numerous SS overhead and bulkhead mounted handholds
- Corian countertops in galley and head
- Overhead, under galley counter and under gunnel LED rope lighting on dimmers
- All outlets in salon, forward stateroom and aft stateroom include 2 USB plugs
- Seagull freshwater filter with outlet at galley and cold-water side in heads
- Lights in many lockers and bilge compartments
- Solid wood louvered doors for ventilation for all cabin and cabinet doors w/ latches
- Queen island berth with two hanging lockers, shelf locker and under berth storage
- Cedar-lined hanging lockers with automatic light when door is opened, solid wood louvered doors for ventilation
- Numerous overhead LED touch lights
- 12v multi-speed fans
- Pillow top, tall coil 7 1/2" inner spring mattress
- Raritan Elegance electric fresh and raw water flush macerating toilet w/holding tank
- Raritan 10-year odor free sanitation hose
- Stand up shower and sitting bench
- Forward head shower divider for vented "wet" locker \$3,000
- Bi-fold shower door with waves and Logo pattern
- Corian counter top (juniper color) and white vessel sink
- Vanity cabinet storage with mirror above sink, trash bin and drawer storage
- Cold water at sink is also filtered with Seagull water filter

Main Salon & Galley

- Two captains chairs (4-way adjustable) to port w/ flip up table \$4,000
- L-settee to starboard w/ full berth slide out
- Under and behind settee storage, ships papers file cabinet
- Large bulkhead mounted single leaf IP foldable salon table w/ glass and bottle storage behind \$2,000
- Salon foot stool w/ seat cushion and storage inside \$2,000
- Safe 1.0 cu ft. w/ digital key pad and cover \$1,000
- Seagull filtered water faucet at galley sink
- Solid Sapele and light maple varnished sole
- Dickinson Mediterranean 3-burner gimbaled propane stove/oven w/ Sapele and Maple stove cover
- Corian counter top (juniper color)
- Vitfrigo DW-100 3.3 cu ft. refrigerator, one drawer unit
- Dish storage and utensil drawers and under counter storage for dry goods
- Seamless bone color Corian galley sink and filler insert
- Oversized pull out trash bin
- One cu ft. microwave
- Under counter dimmable lighting
- Galley under sink cabinet with automatic 12v light
- Manual fresh water hand pump faucet in galley \$500
- 8 total galley storage drawers, 6 with dovetail joinery construction and fold down doors

Utility Room, Aft Stateroom & Head

- Finished as walk in utility room
- Splendide washer/vented dryer combo and Vitfrigo DW-100 3.3 cu ft. freezer \$6,000

- Large double berth with pillow top, tall coil 7 1/2" inner spring mattress
- Large cedar lined hanging locker with louvered door for ventilation and automatic light
- Shelf locker with louvered door
- Solid Sapele and light maple varnished sole
- Numerous under berth storages compartments
- LED lights on dimmer
- Raritan electric fresh and raw water flush toilet into holding tank
- Raritan 10-year odor free sanitation hose
- Stand up shower and sitting bench
- Sink cold water is also filtered with Seagull water filter
- Tri-fold shower door with waves and IP logo pattern
- Corian counter (juniper color) with white vessel sink
- Vanity cabinet storage and mirror above sink

Auxillary Power, Mechanical, Electrical, Tankage and Plumbing

- Yanmar 80hp common rail/smart diesel engine
- Yanmar YD42 multi-function color display engine panel
- (1) dedicated starting battery, 125ah Lifeline 31XT AGM
- Max-Prop 4 blade Easy 21"x15" feathering propeller \$6,000
- Shaft Shark line cutter installed on prop shaft \$1,000
- Side Power SEP100 8.4 HP bow thruster w/2 Lifeline 31XT 125 ah AGM batteries \$15,000
- Northern Lights 6kw generator (68 hrs) w/ soundshiled and start battery \$33,000
- Webasto TH Pro 90 12V-3KW marine coolant diesel heater/hot water system w/ 3 blowers \$22,000
- Spectra NP-400C 12vdc watermaker \$22,000
- Oil change system for engine and generator \$2,000
- Electric macerator pump for overboard discharge \$2,500
- Underwater multi color LED lights \$3,000
- Galvanic isolator, Wakespeed smart alternator current/voltage regulator
- Balmar 170 amp alternator
- (2) 30-amp shore power inlets w/ 50' cords
- (4) LiFePO4 Smart lithium battery 12.8/300 ah each \$12,000
- Victron Multiplus 3000 continuous inverter/ 120 amp charger w/digital touch screen display and digital battery monitor for all charging including solar and wind
- Additional high water bilge pump \$2,000
- (8) 12v Caframo Bora fans \$2,400
- Switchable dual Racor fuel filters/water sensor and electric primer pump
- Engine room exhaust blower
- Isotherm SS 12-gallon water heater
- Wrenches for adjusting the engine shaft log and rudder log
- Aircraft-grade aluminum diesel tank – 160 US gallons
- Fiberglass water and holding tanks- 220/50 US gallons

Electronics, HVAC and Miscellaneous

- Raymarine Axiom Pro S 12.1" MFD w/ CHIRP sonar and Navionics \$4,000
- Raymarine Axiom + 12 MFD w/ touchscren and GPS/GNSS \$3,000
- Raymarine Quantum 2 doppler radar \$2,400
- Raymarine instrument suite including multifunction color displays \$3,800
- Raymarine AIS700 class B \$1,100
- Icom M506 VHF radio and Command Mic 4 and hailer horn \$1,300
- Raymarine autopilot EV400 Sail system \$4,000

• Raymarine Tyoe 2 mechanical linear drive, smart controller and Seataalk and pod	\$4,100
• Raymarine back-up autopilot ACU-400 complete system	\$4,900
• Apollo Series MS-RA770 stereo system with display and polyplanar speakers	\$1,700
• Sirius XM SXV300	\$200
• Wave Wifi booster and Shakespear cell booster with lynksys router	\$2,800
• Iridium GO hotspot	\$600
• Samsung 40" LED smart TV w/ sound bar	\$800
• Starlink antenna and modem (subscription required)	\$2,000
• Air conditioning/heat system for salon and aft head (1) 110v Mabru 17K BTU	\$8,000
• Air conditioning/heat system for cabin and forward head (1) 12v Mabru 7K BTU	\$8,000
• Air conditioning/heat system aft cabin and utility room (1) 12v Mabru 12K BTU	\$9,000
• Thumb drive loaded with owner's manuals	
• Factory commissioning	\$7,500
• USCG safety and docking package	<u>\$2,000</u>

Original Option/Upgrade Total: \$395,000 +/-

Craftsmanship and Superior Materials

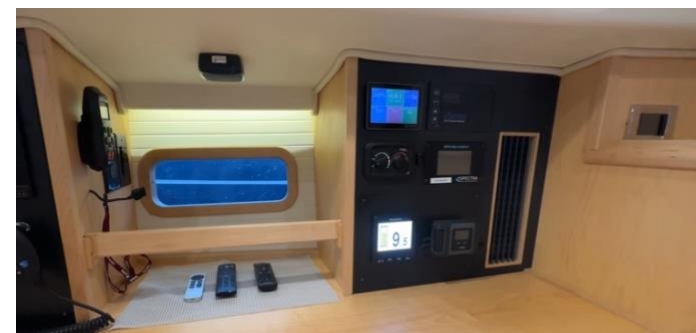
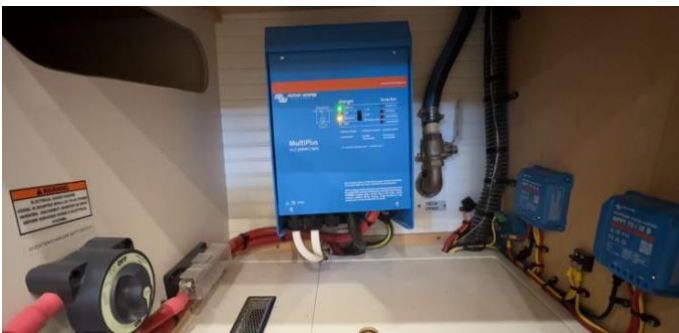
- Coosa composite board in place of marine plywood
- Aqua-Steel and G-10 backing plates versus aluminum
- Aqua-plas composite instead of plywood around port lights
- SS/bronze thru-hulls and bronze ball valves
- Best Hydroschild color retention gelcoat
- Tri-axial woven roving fiberglass cloth, high quality vinyl ester resins
- Solid wood soles, doors, drawers, and trim, locking sole drop boards
- (4) coats satin varnish on interior wood
- Dovetail drawer construction, cedar-lined hanging lockers w/ automatic lighting upon opening
- Divinycell coring on deck, core-mat on headliner and IGU
- Premium marine grade water hoses and marine grade tinned wiring
- Raritan 10-year odor guarantee sanitation hose
- Scandvik sink and shower faucets
- Belt and suspender bonded chainplates made with 316L annealed stainless
- Vacuum bagged resin infused rudder construction
- Protected rudder with heel strap

[YouTube ZALE Video Tour](#)











ISLAND PACKET 439

⌘ CRUISING WITH CONFIDENCE ⌘

At Island Packet Yachts we only build boats to the highest standards of quality, never sacrifice safety. Proudly owned, designed, and built in the USA, Island Packet is characterized by innovation and customization on behalf of our proud owners. Safe, yet surprisingly fast, stable and sea kindly. High end building materials come STANDARD.

We build every yacht to protect all who come aboard. Our owners are WHY we do what we do. Our team curates an ownership experience that is genuine and real. Becoming a part of the Island Packet Family says that YOU care deeply about the safety, comfort and over all sailing experience for your family and friends.

Call us to experience what it feels like to build YOUR boat, YOUR way, by a team that cares about you and your cruising dreams.

QUOTES FROM RECENT NEW OWNERS AND INDUSTRY EXPERTS:

439-02 "Molly D" - After three seasons and thousand miles on the East coast, the 439 has proven to be a comfortable and safe boat on the ICW or offshore. The large store room/ workshop aft of the galley makes it easy to store large items and maintain the machinery. The galley has plenty of drawers, cabinets and counter space while the U-shape keeps the cook secure. The abundance of storage makes outfitting for an extended cruise very easy. The Solent Rig, transom steps and fine IPY craftsmanship throughout draws attention in every harbor. - Dave and Linda

439-05 "Zale" - Working with the IP team on building my IP439 "Zale" was a wonderful experience and, after thousands of miles, "Zale" has demonstrated to be solid and fast (yes, fast!) - Santiago

Neil Harvey, Retired Industry Executive, Captain and Survivor of Fast Net '79

The best sailing, most stable boat I have ever sailed in the Gulf Stream. I have over 12,000 off shore miles on these yachts, including up to 52 knots of off shore wind. Impressed with performance in all conditions... fun in light winds due to the new performance rig!



ISLAND PACKET YACHTS

ipy.com | 727.535.6431 | info@ipy.com



Disclaimer

The Company offers the details of this vessel in good faith and the buyer should instruct his agents or his surveyors to investigate such details as the buyer desires validated. This vessel is offered subject to prior sale, price change, or withdrawal without notice.